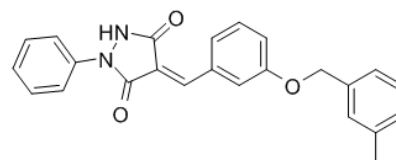


Product Name : Y16
Cat. No. : PC-43137
CAS No. : 429653-73-6
Molecular Formula : C₂₄H₂₀N₂O₃
Molecular Weight : 384.4272
Target : Small GTPase
Solubility : 10 mM in DMSO



Biological Activity

Y16 (RhoA-LARG inhibitor Y16) is a small-molecule inhibitor that specifically inhibits **LARG** binding to **RhoA**, binds to the junction site of the DH-PH domains of LARG with K_d of 80 nM.

Y16 does not affect RhoA interaction with DBL or LBC, also not interfere with the binding of Cdc42 and Rac1.

Y16 suppresses LARG catalyzed RhoA activation dose dependently, selectively inhibits serum-induced RhoA activity and RhoA-mediated signaling.

Y16 inhibits mammary sphere formation of MCF7 breast cancer cells but does not affect the nontransforming MCF10A cells, also works synergistically with Rhosin/G04;

References

Shang X, et al. *Proc Natl Acad Sci U S A*. 2013 Feb 19;110(8):3155-60.

Zhang XE, et al. *PLoS One*. 2016 May 17;11(5):e0155490.

Chen W, et al. *Int J Biochem Cell Biol*. 2017 Dec;93:12-24.

Caution: Product has not been fully validated for medical applications. Lab Use Only!

E-mail: tech@probechem.com